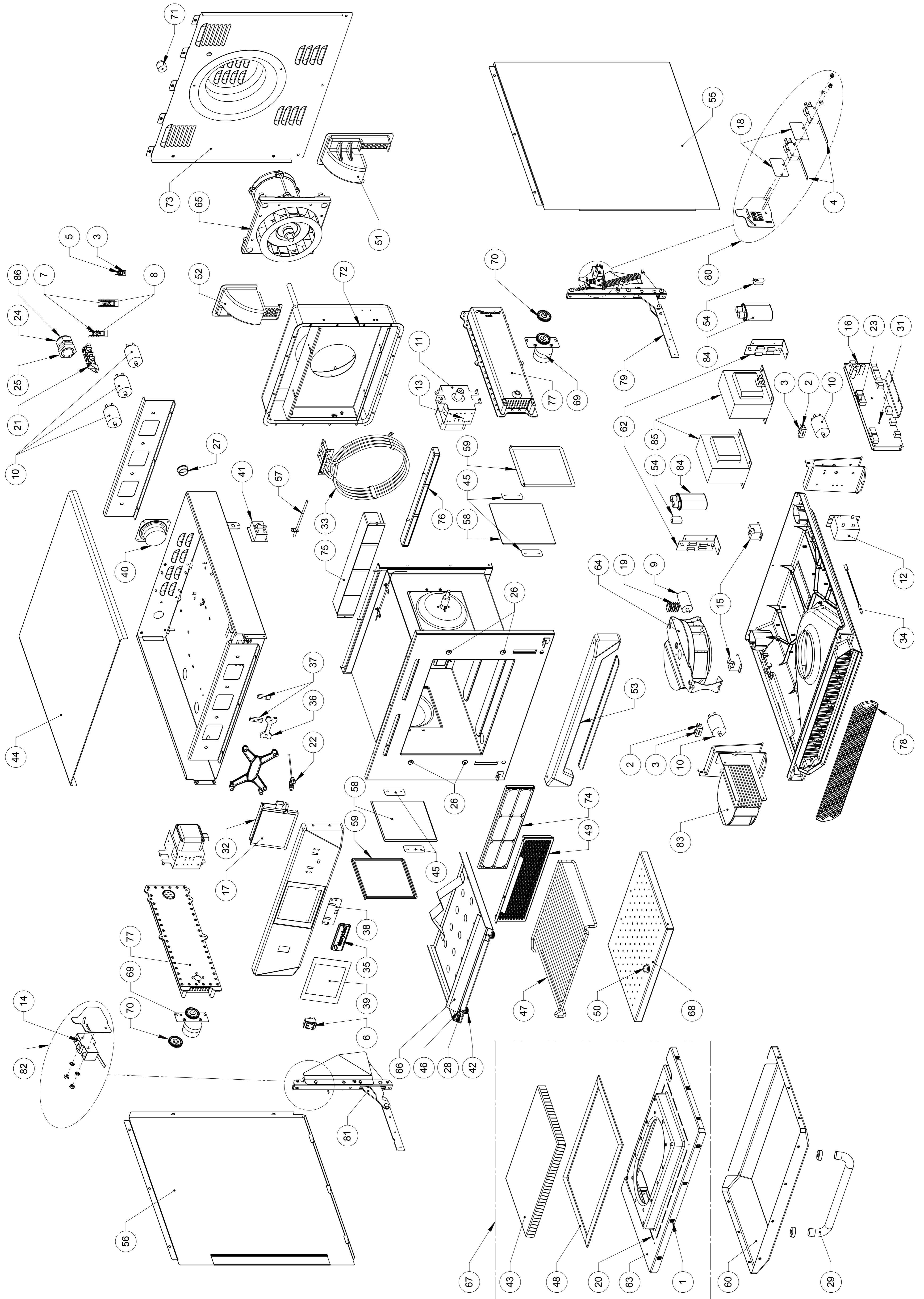


e4 Oven Explod View



Merrychef eikon e4 Oven

Recommended Parts List

Recommended Min Stock Holding & Service List

Service Manual Exploded View	Part Number	Description	Qty Per Oven	Unit	1-10 Ovens	11-50 Ovens	51-100 Ovens	Recommended Service List
1	31Z4046	M3 CAGE NUT	10	EA	10	30	60	
4	30Z1459	MICROSWITCH	2	EA	2	6	12	2
6	30Z0503	SWITCH ON/OFF ROCKER DPST	1	EA	1	3	6	1
7	30Z1177	20 AMP LITTLE FUSE FLM020	2	EA	2	6	12	2
8	30Z1178	30A FUSE HOLDER	2	EA	2	6	12	
10	30Z1340	FILTER 16A SCREW MOUNT	5	EA	5	15	30	
13	30Z1427	MAGNETRON OVERHEAT STAT	2	EA	2	6	12	1
14	30Z1430	MICROSWITCH (LARGE)	1	EA	1	3	6	1
16	P30Z5021	CONTROL PCB UNI SRB	1	EA	1	3	6	1
17	P30Z5009	TOUCH SCREEN QTS UI PCB	1	EA	1	3	6	1
18	31Z0680	INSULATOR PLATE	2	EA	2	6	12	
19	31Z0630	CHOC BLOCK 3-WAY	1	EA	1	3	6	
20	31Z0186	SILASTIC BLACK (DOOR SEAL)		TUBE	1	3	6	1
21	31Z0477	4 WAY MAINS TERMINAL BLOCK	1	EA	1	3	6	
22	31Z0600	USB ADAPTOR MODULE	1	EA	1	3	6	
23	31Z0620	BTS UI SRB CABLE (WHITE)	1	EA	1	3	6	
24	31Z1255	PG21 CABLE GLAND BLACK	1	EA	1	3	6	
25	31Z1256	PG21 CABLE GLAND NUT	1	EA	1	3	6	
26	31Z1259	SHEET COVER CAP 12MM DIA	4	EA	4	12	24	
27	31Z1307	ETHERNET HOLE PLUG	1	EA	1	3	6	
28	31Z3154	M4x6 SET SCREW S/S A2 (IMPINGER)	2	EA	2	6	12	
29	DV0431	DOOR HANDLE	1	EA	1	3	6	
29 - 60	PSA2144	DOOR SKIN ASSY e4	1	EA	1	3	6	
29 - 60 - 67	PSA1138	DOOR ASSY (e4)	1	EA	1	3	6	
31	32Z7062	PERSONALITY MODULE SRB e4	1	EA	1	3	6	1
32	32Z7065	PERSONALITY MODULE QTS e4	1	EA	1	3	6	1
33	PSA1184	HEATER ASSEMBLY KIT e4	1	EA	1	3	6	
34	DR0006	REED SWITCH	1	EA	1	3	6	
35	DR0007	MERRYCHEF BADGE	1	EA	1	3	6	
36	DR0008	MERRYCHEF BADGE SLIDER	1	EA	1	3	6	
37	DR0009	MERRYCHEF BADGE GUIDE	1	EA	1	3	6	
38	DR0047	MERRYCHEF BADGE SEAL	1	EA	1	3	6	
39	DR0011	TOUCHSCREEN OVERLAY	1	EA	1	3	6	1
40	DR0021	HARMONISED SPEAKER	1	EA	1	3	6	
41	PSR153	OTS REPLACEMENT KIT 2021 (NOTE-7 BELOW)	1	EA	1	3	6	
42	DV0061	IMPINGER THUMB NUT	2	EA	2	6	12	
43	DV0808	e4s DOOR CHOKE S/S (NOTE-6 BELOW)	1	EA	1	3	6	
44	DV0187	TOP PANEL (PRESSED)	1	EA	1	3	6	
45	DV0202	CERAMIC PLATE RETAINER	4	EA	4	12	24	
46	DV0239	IMPINGER FIXING - FAST THREAD	2	EA	2	6	12	
48	PSA3113	DOOR SEAL	1	EA	1	3	6	1
49	DV0752	GREASE FILTER HOUSING e4 (NOTE-1 BELOW)	1	EA	1	3	6	
50	DV0370	LOWER IMPINGER HANDLE	1	EA	1	3	6	
51	DV0816	e4s CAST RH DUCT	1	EA	1	3	6	
52	DV0403	CAST REAR DUCTING LH	1	EA	1	3	6	
53	DV0437	LOWER FASCIA FINISHED	1	EA	1	3	6	
54	DV0452	CAPACITOR CLIP	2	EA	2	6	12	
55	DV0840	e4s RH SIDE PANEL	1	EA	1	3	6	
56	DV0841	e4s LH SIDE PANEL	1	EA	1	3	6	
57	DR0240	THERMOCOUPLE K-101.5 (OVEN) (NOTE-9 BELOW)	1	EA	1	3	6	1
58	PSR122	e3/e4s STIRRER PLATE&SEAL KIT	2	EA	2	6	12	2
59	DV0692	SEAL - CERAMIC COVER	2	EA	2	6	12	2
60	DV0700	DOOR SKIN	1	EA	1	3	6	
62	PSR109	DIODE REPLACEMENT KIT	2	EA	2	6	12	2
64	PSA2195	COOLING FAN SUB-ASSEMBLY	1	EA	1	3	6	
65	PSA1180	HOT AIR MOTOR ASSY	1	EA	1	3	6	
66	PSA2101	TOP IMPINGER PLATE SS	1	EA	1	3	6	
67	PSA246	DOOR + CHOKE ASSY (PRESSED)	1	EA	1	3	6	
68	PSA266	IMPINGER PLATE LOWER	1	EA	1	3	6	
70	PSA291	STIRRER ASSY (PINNED)	2	EA	2	6	12	
71	6004011	RUBBER FOOT O 40 x25	1	EA	1	3	6	
72	DV0648	CAVITY HOT BOX FINISHED	1	EA	1	3	6	
73	SA329	REAR PANEL ASSY	1	EA	1	3	6	
74	SA3126	GREASE FILTER CARTRIDGE (NOTE-1 BELOW)	1	EA	1	3	6	
75	DV0934	UPPER CATALYST e4	1	EA	1	3	6	
76	DV0935	LOWER CATALYST e4	1	EA	1	3	6	
77	SA374	CAST WAVEGUIDE ASSY	2	EA	2	6	12	

Merrychef eikon e4 Oven

Recommended Parts List

Recommended Min Stock Holding & Service List

Service Manual Exploded View	Part Number	Description	Qty Per Oven	Unit	1-10 Ovens	11-50 Ovens	51-100 Ovens	Recommended Service List
78	SA3127	AIR FILTER ASSY	1	EA	1	3	6	1
79 - 81	PSR101	eikon DOOR HINGE KIT (NOTE-3 BELOW)	1	EA	1	3	6	
80 - 82	PSR102	eikon M/SWITCH BRACKET KIT	1	EA	1	3	6	
83	PSA1295	MOTOR SPEED CONTROLLER (EU)	1	EA	1	3	6	
Not Numbered	DV0838	CONTROL PANEL e4/e4s	1	EA	1	3	6	
Not Numbered	SA312	VENT PIPE	1	EA	1	3	6	
Not Shown	30Z1457	eikon SRB 1.25A FUSE	1	EA	1	3	6	1
Not Shown	31Z1271	SILICONE FOAM TAPE CUT (MAG DUCTS)	2	EA	2	6	12	
Not Shown	DR0045	SPEAKER WIRE	1	EA	1	3	6	
Not Shown	DV0638	402s RUBBER BASE	1	EA	1	3	6	
Not Shown	PSA3105	GASKET KIT	1	EA	1	3	6	
Not Shown	SA3107	CAVITY WRAP ASSY	1	EA	1	3	6	
Not Shown	SA3109	e4 DOOR INSULATION KIT	1	EA	1	3	6	

eikon e4 230Volts 50Hz 16A - EU (UR) - Unique Parts

As eikon e4 230Volts 50Hz 32A - UK/DE/EU but with differences below

3	30Z0231	FUSEHOLDER 1in (13A)	4	EA	4	12	24	
5	30Z0394	FUSE 1in 7A HRC	2	EA	2	6	12	1
15	30Z1440	RELAY 240V OMRON	1	EA	1	3	6	1
86	SA2205	e4 3/PHASE MAINS LEAD 16A RED PLUG	1	EA	1	3	6	

eikon e4 230Volts 50Hz 32A - UK/DE/EU - Unique Parts

2	30Z0217	FUSE 1in 10A HRC	2	EA	2	6	12	2
3	30Z0231	FUSEHOLDER 1in (13A)	3	EA	3	9	18	
5	30Z0394	FUSE 1in 7A HRC	1	EA	1	3	6	1
9	30Z1298	CAPACITOR COOL MTR START (NOTE-4 BELOW)	1	EA	1	3	6	
11	P30Z1415	MAGNETRON 2M303H	2	EA	2	6	12	1
12	30Z1425	TRANSFORMER 240V 50/60Hz	1	EA	1	3	6	1
69	PSA288	STIRRER MOTOR ASSY (PINNED)	2	EA	2	6	12	
84	30Z1332	1.05uF 2500V CAPACITOR	2	EA	2	6	12	2
85	P30Z1413	230V 50Hz TRANSFORMER	2	EA	2	6	12	
86	PSA225	MAINS LEAD ASSY (EU) 4-C 32A RED PLUG	1	EA	1	3	6	
86	PSA226	MAINS LEAD ASSY (UK) 3-C 16A BLUE PLUG	1	EA	1	3	6	

eikon e4 230Volts 50Hz 32A - AP - Unique Parts

As above eikon e4 230Volts 50Hz 32A - UK/DE/EU but with Power Cable below

86	PSA225	MAINS LEAD ASSY (EU) 4-C 32A RED PLUG	1	EA	1	3	6	
----	--------	---------------------------------------	---	----	---	---	---	--

eikon e4 230Volts 50Hz 32A - AZ (HM/GC/GK/GL) - Unique Parts

As above eikon e4 230Volts 50Hz 32A - UK/DE/EU but with different Power Cables

86	DX0113	MAINS LEAD ASSY 1P GM (AZ)	1	EA	1	3	6	
86	PSA225	MAINS LEAD ASSY (EU) 4-C 32A RED PLUG	1	EA	1	3	6	
86	SR216	MAINS SUPPLY LEAD GK (AZ)	1	EA	1	3	6	
86	SR292	MAINS LEAD ASSY HJ (AZ) GL	1	EA	1	3	6	

eikon e4 230Volts 50Hz 32A - BO (DE) - Unique Parts

As above eikon e4 230Volts 50Hz 32A - UK/DE/EU but with differences below

2	30Z1445	FUSE 10A UL	2	EA	2	6	12	1
3	30Z0285	FUSEHOLDER 1 1/4in	3	EA	3	9	18	
5	30Z1444	FUSE 7A UL	1	EA	1	3	6	1
12	30Z1587	LV TRANS HCT	1	EA	1	3	6	1
86	SR229	MAINS SUPPLY LEAD DE	1	EA	1	3	6	

eikon e4 220Volts 50Hz 32A - CN - Unique Parts

As above eikon e4 230Volts 50Hz 32A - UK/DE/EU but with differences below

85	P30Z1233	50Hz TRANS MULTI 220 240	1	EA	1	3	6	
86	SA2111	MAINS CABLE ASSY 1P CHINA	1	EA	1	3	6	

Merrychef eikon e4 Oven

Recommended Parts List

Recommended Min Stock Holding & Service List

Service Manual Exploded View	Part Number	Description	Qty Per Oven	Unit	1-10 Ovens	11-50 Ovens	51-100 Ovens	Recommended Service List
------------------------------	-------------	-------------	--------------	------	------------	-------------	--------------	--------------------------

eikon e4 220Volts 50Hz 32A - ID - Unique Parts

As above eikon e4 230Volts 50Hz 32A - UK/DE/EU but with differences below

85	P30Z1233	50Hz TRANS MULTI 220 240	1	EA	1	3	6	
86	PSA226	MAINS LEAD ASSY (EU) 4-C 32A RED PLUG	1	EA	1	3	6	

eikon e4 230Volts 50Hz 32A - IN - Unique Parts

As above eikon e4 230Volts 50Hz 32A - UK/DE/EU but with Power Cable below

86	PSA225	MAINS LEAD ASSY (EU) 4-C 32A RED PLUG	1	EA	1	3	6	
----	--------	---------------------------------------	---	----	---	---	---	--

eikon e4 200Volts 50Hz 32A - JP - Unique Parts

As above eikon e4 230Volts 50Hz 32A - UK/DE/EU but with differences below

11	P30Z1525	MAGNETRON - JAPAN	2	EA	2	6	12	1
64	PSA2153	200V COOLING FAN SUB-ASSEMBLY	1	EA	1	3	6	
69	PSA2154	200V STIRRER MOTOR ASSY (PINNED)	2	EA	2	6	12	
85	P30Z1463	200V 50HZ TRANSFORMER (50Hz ONLY)	2	EA	2	6	12	
86	SA2110	MAINS CABLE ASSY DE (JP)	1	EA	1	3	6	

eikon e4 230Volts 50Hz 32A - LA - Unique Parts

As above eikon e4 230Volts 50Hz 32A - UK/DE/EU but with differences below

2	30Z1445	FUSE 10A UL	2	EA	2	6	12	1
3	30Z0285	FUSEHOLDER 1 1/4in	3	EA	3	9	18	
5	30Z1444	FUSE 7A UL	1	EA	1	3	6	1
12	30Z1587	LV TRANS HCT	1	EA	1	3	6	1
86	31Z1266	PLUG & LEAD ASSY (SUBWAY)	1	EA	1	3	6	

eikon e4 230Volts 50Hz 32A - PL (3M/GC) - Unique Parts

As above eikon e4 230Volts 50Hz 32A - UK/DE/EU but with different Power Cables

86	PSA225	MAINS LEAD ASSY (EU) 4-C 32A RED PLUG	1	EA	1	3	6	
86	SR217	MAINS SUPPLY LEAD EC 3M	1	EA	1	3	6	

eikon e4 220Volts 60Hz 30A - BR (DJ) - Unique Parts

2	30Z1445	FUSE 10A UL	2	EA	2	6	12	2
3	30Z0285	FUSEHOLDER 1 1/4in	3	EA	3	9	18	
5	30Z1444	FUSE 7A UL	1	EA	1	3	6	1
9	30Z1446	STARTER CAP 2uF UL - COOLING (NOTE-5 BELOW)	1	EA	1	3	6	
11	P30Z1415	MAGNETRON 2M303H	2	EA	2	6	12	1
12	30Z1587	LV TRANS HCT	1	EA	1	3	6	1
69	PSA288	STIRRER MOTOR ASSY (PINNED)	2	EA	2	6	12	
84	30Z1330	0.88uF 2500V CAPACITOR	2	EA	2	6	12	2
85	P30Z1230	60HZ TRANS MULTI TAP	2	EA	2	6	12	
86	SR228	MAINS SUPPLY LEAD DJ	1	EA	1	3	6	

eikon e4 208/240Volts 60Hz 30A - CA (DF) - Unique Parts

As above eikon e4 220Volts 60Hz 30A - BR but with differences below

15	30Z1439	RELAY 12V OMRON	2	EA	2	6	12	2
86	31Z1266	PLUG & LEAD ASSY (SUBWAY)	1	EA	1	3	6	

eikon e4 208/240Volts 60Hz 30A - LA (DF) - Unique Parts

As above eikon e4 220Volts 60Hz 30A - BR but with different Power Cable

15	30Z1439	RELAY 12V OMRON	2	EA	2	6	12	2
86	31Z1266	PLUG & LEAD ASSY (SUBWAY)	1	EA	1	3	6	

eikon e4 220Volts 60Hz 30A - MX - Unique Parts

As above eikon e4 220Volts 60Hz 30A - BR but with different Power Cable

86	31Z1266	PLUG & LEAD ASSY (SUBWAY)	1	EA	1	3	6	
----	---------	---------------------------	---	----	---	---	---	--

Merrychef eikon e4 Oven

Recommended Parts List

Recommended Min Stock Holding & Service List

Service Manual Exploded View	Part Number	Description	Qty Per Oven	Unit	1-10 Ovens	11-50 Ovens	51-100 Ovens	Recommended Service List
------------------------------	-------------	-------------	--------------	------	------------	-------------	--------------	--------------------------

eikon e4 208V/240V 60Hz 30A - USA (DF/DH) - Unique Parts

As above eikon e4 220Volts 60Hz 30A - BR but with differences below

15	30Z1439	OMRON RELAY 12V	2	EA	2	6	12	1
86	31Z1266	PLUG & LEAD ASSY (SUBWAY)	1	EA	1	3	6	
86	DX0104	MAINS SUPPLY LEAD D (US)	1	EA	1	3	6	

eikon e4 200Volts 60Hz 32A - JP - Unique Parts

As above eikon e4 230Volts 50Hz 32A - JP but with differences below

84	30Z1330	0.88uF 2500V CAPACITOR	2	EA	2	6	12	2
----	---------	------------------------	---	----	---	---	----	---

eikon e4 220Volts 60Hz 32A - KR (HE) - Unique Parts

As above eikon e4 230Volts 50Hz 32A - UK/DE/EU but with differences below

84	30Z1330	0.88uF 2500V CAPACITOR	2	EA	2	6	12	2
85	P30Z1230	60HZ TRANS MULTI TAP	2	EA	2	6	12	
86	PSA226	MAINS LEAD ASSY (UK) 3-C 16A BLUE PLUG	1	EA	1	3	6	

eikon e4 220Volts 60Hz 32A - PH (MH) - Unique Parts

As above eikon e4 230Volts 50Hz 32A - UK/DE/EU but with differences below

84	30Z1330	0.88uF 2500V CAPACITOR	2	EA	2	6	12	2
85	P30Z1230	60HZ TRANS MULTI TAP	2	EA	2	6	12	
86	SA2128	MAINS CABLE ASSY PHILIPPINESS	1	EA	1	3	6	

eikon e4 220Volts 60Hz 32A - SA (GC/HE) - Unique Parts

As above eikon e4 220Volts 60Hz 32A - PH but with different Power Cables

86	PSA225	MAINS LEAD ASSY (EU) 4-C 32A RED PLUG	1	EA	1	3	6	
86	PSA226	MAINS LEAD ASSY (UK) 3-C 16A BLUE PLUG	1	EA	1	3	6	

eikon e4 220Volts 60Hz 32A - TW (DZ/NZ) - Unique Parts

As above eikon e4 220Volts 60Hz 30A - BR but with differences below

2	30Z0217	FUSE 1in 10A HRC	2	EA	2	6	12	2
3	30Z0231	FUSEHOLDER 1in (13A)	3	EA	3	9	18	
5	30Z0394	FUSE 1in 7A HRC	1	EA	1	3	6	1
9	30Z1298	CAPACITOR COOL MTR START (NOTE-4 BELOW)	1	EA	1	3	6	
12	30Z1425	TRANSFORMER 240V 50/60Hz	1	EA	1	3	6	1
86	SA2146	MAINS LEAD DZ e4	1	EA	1	3	6	
86	SA2147	MAINS LEAD NZ e4	1	EA	1	3	6	

eikon e4 Upgrade Kits & Service Kits - All Models

Not Shown	PSA1188	IMPINGER PLATE BRKT FIXING KIT		EA	1	3	6	
Not Shown	PSA1189	REPLACEMENT SCREW SET KIT		EA	1	3	6	
Not Shown	PSA1192	GREASE FILTER UPGRADE KIT (NOTE-1 BELOW)		EA	1	3	6	
Not Shown	PSA1193	IMPINGER RESTING PLATE KIT		EA	1	3	6	
Not Shown	PSA1217	LOW NOISE MODIFICATION KIT e4 (NOTE-2 BELOW)		EA	1	3	6	
Not Shown	PSA1272	e4/e4s PARTS FLIGHT KIT		EA	1	3	6	1
Not Shown	PSR110	TEN SPRING SERVICE KIT e3/e4/e4s/e5 & 402s		EA	1	3	6	
Not Shown	PSR113	TWO SPRING SERVICE KIT e3/e4/e4s/e5 & 402s		EA	1	3	6	1

Merrychef eikon e4 Oven

Recommended Parts List

Recommended Min Stock Holding & Service List

Service Manual Exploded View	Part Number	Description	Qty Per Oven	Unit	1-10 Ovens	11-50 Ovens	51-100 Ovens	Recommended Service List
e4 Accessories								
47	PDV0907	ENAMELLED S/S RACK e4	1	EA	1	3	6	
Not Shown	32Z4028	HALF SIZE GASTRONOM DISH	1	EA	1	3	6	
Not Shown	32Z4032	HASH-BROWN WEAVE BASKET		EA	1	3	6	
Not Shown	32Z4054	BASKET MESH 292 x 343 x 25mm		EA	1	3	6	
Not Shown	40H0240	ALUMINIUM PTFE TRAY		EA	1	3	6	
Not Shown	DV0343	GRIDDLE CARRIER (FOR PSA1108)		EA	1	3	6	
Not Shown	DV0344	GRIDDLE CARRIER HANDLE (FOR PSA1108)		EA	1	3	6	
Not Shown	DV0860	e4 GRIDDLE COOK PLATE		EA	1	3	6	
Not Shown	DX0117	SQUARE BAKING TRAY	1	EA	1	3	6	
Not Shown	PSA1108	GRIDDLE ACCESSORY PACK		EA	1	3	6	
Not Shown	PSA1248	COOK PLATE KIT - USA		EA	1	3	6	
Not Shown	PSA299	4PACK GRIDDLE PLATES (FOR PSA1108)		EA	1	3	6	
Not Shown	SR310	LARGE PADDLE ALUM ASSY		EA	1	3	6	

NOTES:

NOTE-1 From November 2011 DV0752 & SA3126 Replaced DV0366 & SA340 Grease Filter Arrangement **NOTE-2** Upgrade option for ovens pre March 2013

NOTE-3 In the event of a broken Hinge Spring, then PSR113 - Two Spring Service Kit or PSR110 - Ten Spring Service Kit are available with tool - NOTE Springs **MUST** be replaced in Pairs.

NOTE-4 For Pre July 2014 Ovens - Not supported on Post July 2014 Ovens

NOTE-5 For Pre Aug 2013 US/BO/BR/LA & MX Ovens - Not supported on Post Aug 2013 Ovens

NOTE-6 From Feb2019 DV0808 replaced DV0168VIT

NOTE-7 From Apr 2021 Oven Temp Stat changed from DR0079

NOTE-8 30Z1319 superseded with PSA1295 both items can be used.

NOTE-9 DR0240 has superseded DR0241 both can be used.