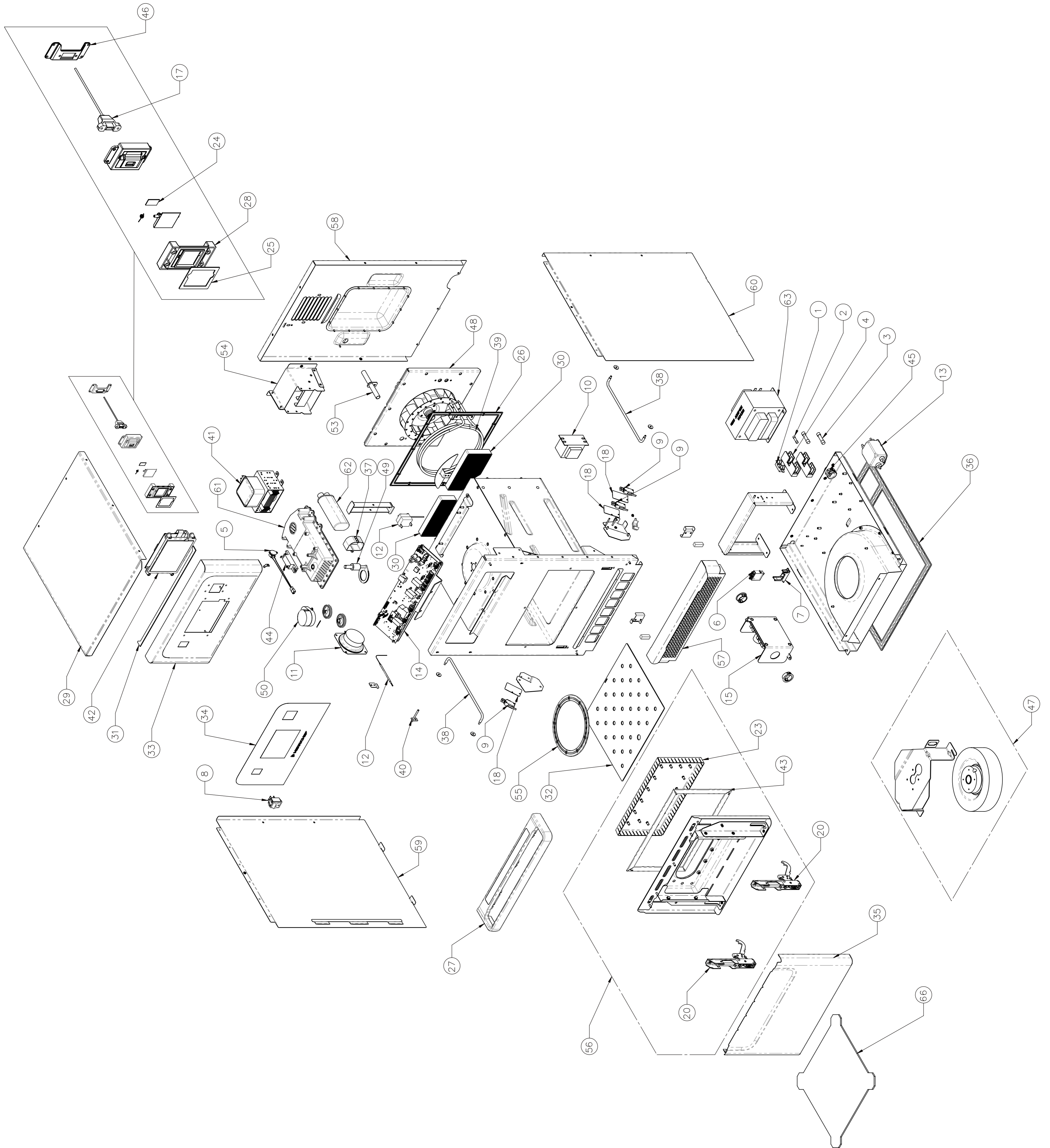


e1s Oven Exploded View



Merrychef eikon e1s Oven

LEGEND

1234567	e1s Unique Part
1234567	eikon Common Part

Recommended Parts List

Recommended Min Stock Holding & Service List

Service Manual Exploded View	Part Number	Description	Qty Per Oven	Unit	1-10 Ovens	11-50 Ovens	51-100 Ovens	Recommended Service List	Alternative Common eikon Part
3	30Z1598	LARGE 20A FUSE	2	EA	2	6	12	2	30Z1177
4	30Z1599	FUSE HOLDER HC101A	2	EA	2	6	12		30Z1178
5	S16-664	MAGNETRON OVERHEAT STAT - JIAMA	1	EA	1	3	6	1	
6	30Z1439	RELAY 12V OMRON	1	EA	1	3	6	1	
8	30Z1584	e1s ON/OFF SWITCH	1	EA	1	3	6	1	
9	30Z1586	MICROSWITCH SHORT ARM	3	EA	3	9	18	3	
10	30Z1587	LV TRANS HCT	1	EA	1	3	6	1	
11	30Z1588	SPEAKER	1	EA	1	3	6		DR0021
12	30Z1589	CAVITY OVERHEAT STAT	1	EA	1	3	6	1	
13	30Z1593	MAINS FILTER	1	EA	1	3	6		
14	P30Z5021	CONTROL PCB UNI SRB	1	EA	1	3	6	1	
15	P30Z5044	VFD SPEED CONTROLLER KIT (NOTE-2 BELOW)	1	EA	1	3	6		
17	31Z0684	RIGHT ANGLED USB ADAPTOR LEAD	1	EA	1	3	6		31Z0600
18	31Z0680	ISOLATOR PLATE	3	EA	3	9	18		
20	31Z1374	FARINGOSI HINGE	2	EA	2	6	12	2	
23	DC0324	DOOR CHOKE	1	EA	1	3	6		
24	DB0277	USB SEAL e2s	1	EA	1	3	6		
24	DB0277	USB SEAL e2s	1	EA	1	3	6		
25	DB0279	MOUNTING SEAL e2s	1	EA	1	3	6		
27	PSC132	e1s DOOR HANDLE ASSY-RoW	1	EA	1	3	6		
28	DC0179	e1s USB INTERFACE	1	EA	1	3	6		
29	DC0189	TOP CASEWORK	1	EA	1	3	6		
30	DC0191	CATALYST	2	EA	2	6	12		
31	DC0219	CONTROL PANEL GASKET	1	EA	1	3	6		
32	DC0238	IMPINGER PLATE - MICA (NOTE-1 BELOW)	1	EA	1	3	6	2	
32	PDC0364	IMPINGER PLATE BESTHERMO F (NOTE-1 BELOW)	1	EA	1	3	6	2	
33	DC0244	CONTROL PANEL	1	EA	1	3	6		
34	DC0245	FLAT OVERLAY	1	EA	1	3	6	1	
35	DC0248	DOOR SKIN	1	EA	1	3	6		
36	DC0288	MOULDED BASE SEAL	1	EA	1	3	6		
37	DC0301	CAPACITOR CLIP	1	EA	1	3	6		
38	DC0320	WIRE RUNNER	2	EA	2	6	12		
39	PDR0142	HEATER ELEMENT 2200W	1	EA	1	3	6		
40	DR0354	THERMOCOUPLE TYPE K	1	EA	1	3	6	1	
41	P30Z1472	MAGNETRON	1	EA	1	3	6	1	
42	P30Z5009	TOUCH SCREEN BTS UI PCB	1	EA	1	3	6	1	
43	PSB316	e2s DOOR SEAL	1	EA	1	3	6	1	
44	PSR109	DIODE REPLACEMENT KIT	1	EA	1	3	6	1	
45	DB0279	M25 GLAND LOCK NUT	1	EA	1	3	6		
46	SB374	USB PLASTIC PARTS ASSY	1	EA	1	3	6		
47	PSC201	e1s COOLING FAN ASSEMBLY	1	EA	1	3	6	1	
49	PSC222	e1s STIRRER ASSEMBLY	1	EA	1	3	6		
50	PSC223	e1s STIRRER MOTOR ASSEMBLY	1	EA	1	3	6	1	
53	SC333	STEAM PIPE ASSY	1	EA	1	3	6		
54	SC341	DUCT ASSEMBLY	1	EA	1	3	6		
55	SC344	PARTITION PLATE	1	EA	1	3	6	1	
56	PSC348	e1s DOOR FRAME ASSY	1	EA	1	3	6		
57	SC349	AIR FILTER FRAME ASSEMBLY	1	EA	1	3	6	1	
58	SC351	BACK PANEL ASSY	1	EA	1	3	6		
59	SC360	LH SIDE CASEWORK	1	EA	1	3	6		
60	SC361	RH SIDE CASEWORK	1	EA	1	3	6		
61	PSR317	e2s WAVEGUIDE ASSEMBLY	1	EA	1	3	6		
Not Numbered	DV0552	GEAR - StIRRER WHEEL	1	EA	1	3	6		
Not Shown	30Z1457	eikon SRB 1.25A FUSE	1	EA	1	3	6		
Not Shown	31Z0186	SILASTIC - BLACK (DOOR SEAL)		TUBE	0	0	0	1	
Not Shown	31Z0693	CABLE BTS UI SRB	1	EA	1	3	6		31Z0688
Not Shown	32Z7081	PERSONALITY MODULE e1s SRB	1	EA	1	3	6	1	
Not Shown	32Z7082	PERSONALITY MODULE e1s QTS	1	EA	1	3	6	1	
Not Shown	PSC128	e1s DOOR M/SWITCH ASSY KIT	2	EA	2	6	12		
Not Shown	PSC311	e1s DOOR INSULATION KIT	1	EA	1	3	6		
Not Shown	SC310	CAVITY INSULATION KIT	1	EA	1	3	6		

Merrychef eikon e1s Oven

LEGEND	1234567	e1s Unique Part
	1234567	eikon Common Part

Recommended Parts List

Recommended Min Stock Holding & Service List

Service Manual Exploded View	Part Number	Description	Qty Per Oven	Unit	1-10 Ovens	11-50 Ovens	51-100 Ovens	Recommended Service List	Alternative Common eikon Part
------------------------------	-------------	-------------	--------------	------	------------	-------------	--------------	--------------------------	-------------------------------

eikon e1s 200/230Volts 50Hz 13A - UK - Unique Parts

1	30Z0231	FUSE HOLDER 1" (13A)	1	EA	1	3	6		
2	30Z0456	13A FUSE 1" BULGIN FX0331	1	EA	1	3	6	1	
48 & 26	PSC238-50Hz	e1s MF CONVEC MOTOR KIT	1	EA	1	3	6	1	
62	30Z1529	0.90uF CAPACITOR 2500V	1	EA	1	3	6	1	
63	P30Z1540	MV HT TRANSFORMER 50Hz	1	EA	1	3	6		
Not Shown	SR280	MAINS SUPPLY LEAD XA 13A	1	EA	1	3	6		

eikon e1s 200/230Volts 50Hz 16A - EU - Unique Parts**As above e1s 200/230Volts 50Hz 13A - UK but with different Power Cable**

Not Shown	SR290	MAINS SUPPLY LEAD XM	1	EA	1	3	6		
-----------	-------	----------------------	---	----	---	---	---	--	--

eikon e1s 200/230Volts 50Hz 16A - AP - Unique Parts**As above e1s 200/230Volts 50Hz 13A - UK but with different Power Cable**

Not Shown	SR281	MAINS SUPPLY LEAD XB Schuko 16A	1	EA	1	3	6		
-----------	-------	---------------------------------	---	----	---	---	---	--	--

eikon e1s 200/230Volts 50Hz 13A - AR - Unique Parts**As above e1s 200/230Volts 50Hz 13A - UK but with different Power Cable**

Not Shown	SR283	MAINS SUPPLY LEAD XD	1	EA	1	3	6		
-----------	-------	----------------------	---	----	---	---	---	--	--

eikon e1s 200/230Volts 50Hz 13A - AZ - Unique Parts**As above e1s 200/230Volts 50Hz 13A - UK but with different Power Cable**

Not Shown	SR283	MAINS SUPPLY LEAD XD	1	EA	1	3	6		
-----------	-------	----------------------	---	----	---	---	---	--	--

eikon e1s 200/230Volts 50Hz 13A - CN - Unique Parts**As above e1s 200/230Volts 50Hz 13A - UK but with different Power Cable**

Not Shown	SR284	MAINS SUPPLY LEAD XE	1	EA	1	3	6		
-----------	-------	----------------------	---	----	---	---	---	--	--

eikon e1s 200/230Volts 50Hz 13A - CL - Unique Parts**As above e1s 200/230Volts 50Hz 13A - UK but with different Power Cable**

Not Shown	SR285	MAINS SUPPLY LEAD XF	1	EA	1	3	6		
-----------	-------	----------------------	---	----	---	---	---	--	--

eikon e1s 200/230Volts 50Hz 13A - IN - Unique Parts**As above e1s 200/230Volts 50Hz 13A - UK but with different Power Cable**

Not Shown	SR290	MAINS SUPPLY LEAD XM	1	EA	1	3	6		
-----------	-------	----------------------	---	----	---	---	---	--	--

eikon e1s 200/230Volts 50Hz 16A - RU - Unique Parts**As above e1s 200/230Volts 50Hz 13A - UK but with different Power Cable**

Not Shown	SR281	MAINS SUPPLY LEAD XB Schuko 16A	1	EA	1	3	6		
-----------	-------	---------------------------------	---	----	---	---	---	--	--

eikon e1s 200/230Volts 50Hz 13A - ZA - Unique Parts**As above e1s 200/230Volts 50Hz 13A - UK but with different Power Cable**

Not Shown	SR286	MAINS SUPPLY LEAD XG	1	EA	1	3	6		
-----------	-------	----------------------	---	----	---	---	---	--	--

Merrychef eikon e1s Oven

LEGEND	1234567	e1s Unique Part
	1234567	eikon Common Part

Recommended Parts List

Recommended Min Stock Holding & Service List

Service Manual Exploded View	Part Number	Description	Qty Per Oven	Unit	1-10 Ovens	11-50 Ovens	51-100 Ovens	Recommended Service List	Alternative Common eikon Part
------------------------------	-------------	-------------	--------------	------	------------	-------------	--------------	--------------------------	-------------------------------

eikon e1s 208/240Volts 60Hz 13A - BR - Unique Parts

1	30Z0231	FUSE HOLDER 1" (13A)	1	EA	1	3	6		
2	30Z0456	13A FUSE 1" BULGIN FX0331	1	EA	1	3	6	1	
48 & 26	PSC238-60Hz	e1s MF CONVEC MOTOR KIT	1	EA	1	3	6	1	
62	30Z1329	0.75uF CAPACITOR	1	EA	1	3	6	1	
63	P30Z1558	MV HT TRANSFORMER 60Hz	1	EA	1	3	6		
Not Shown	SR286	MAINS SUPPLY LEAD XG	1	EA	1	3	6		

eikon e1s 208/240Volts 60Hz 13A - KR - Unique Parts**As above e1s 208/240Volts 60Hz 13A - BR but with differences below**

48 & 26	PSC238-KR	e1s MF CONVEC MOTOR KIT	1	EA	1	3	6	1	
Not Shown	SR282	MAINS SUPPLY LEAD XC 16A	1	EA	1	3	6		

eikon e1s 208/240Volts 60Hz 13A - LA - Unique Parts**As above e1s 208/240Volts 60Hz 13A - BR but with different Power Cable**

Not Shown	SR287	MAINS SUPPLY LEAD XH	1	EA	1	3	6		
-----------	-------	----------------------	---	----	---	---	---	--	--

eikon e1s 208/240Volts 60Hz 13A - PH - Unique Parts**As above e1s 208/240Volts 60Hz 13A - BR but with different Power Cable**

Not Shown	SR288	MAINS SUPPLY LEAD XJ	1	EA	1	3	6		
-----------	-------	----------------------	---	----	---	---	---	--	--

eikon e1s 208/240Volts 60Hz 13A - SA - Unique Parts**As above e1s 208/240Volts 60Hz 13A - BR but with different Power Cable**

Not Shown	SR280	MAINS SUPPLY LEAD XA 13A	1	EA	1	3	6		
-----------	-------	--------------------------	---	----	---	---	---	--	--

eikon e1s 208/240Volts 60Hz 13A - TW - Unique Parts**As above e1s 208/240Volts 60Hz 13A - BR but with different Power Cable**

Not Shown	SR289	MAINS SUPPLY LEAD XL	1	EA	1	3	6		
-----------	-------	----------------------	---	----	---	---	---	--	--

e1s Accessories

66	DC0322	FLAT COOK PLATE	1	EA	1	3	6		
Not Shown	3Z24135	e1s SOLID BASKET 11"x11"		EA	1	3	6		32Z4080
Not Shown	3Z24136	e1s LINER		EA	1	3	6		32Z4088
Not Shown	DC0327	e1s WIRE RACK		EA	1	3	6		
Not Shown	SR318	GUARDED PADDLE e2s	1	EA	1	3	6		

NOTES:**NOTE-1** From Oct 2019 Impinger Plate changed to PDC0364, for Pre Oct 2019 Ovens use DC0238**NOTE-2** From the introduction of the PSC238-50Hz & 60Hz Convection Motor in Jan 2022 from PSC220, VFD Speed Controller Changed from P30Z5030 to P30Z5044.